



DESC 15TH AVENUE W. PERMANENT SUPPORTIVE HOUSING

Public Meeting

Sept. 21, 2022

6:30-7:30 p.m.



DESC HISTORY

- Founded in 1979, the Downtown Emergency Service Center (DESC) opened as overnight emergency shelter in Pioneer Square.



TODAY: DESC PROVIDES A VARIETY OF SERVICES FOR ADULTS EXPERIENCING HOMELESSNESS ACROSS SEATTLE.



ADVOCACY



EMPLOYMENT SERVICES



HOUSING FIRST



CRISIS RESPONSE



RESEARCH & INNOVATION



HEALTH SERVICES



WRAP-AROUND SERVICES



SURVIVAL SERVICES

DESC'S APPROACH TO HOUSING

HOUSING FIRST PHILOSOPHY

- Housing is a human right
- Once people are housed, they are more likely to access critical services.
- Prioritize those most in need.

DESC

- This is permanent housing; people stay as long as they like.
- Individuals become tenants of our buildings.
 - They pay rent.
 - Sign a legally binding lease.
 - Same Renters Rights as any Seattle renter.



SERVICES FOR TENANTS

- Case management or support services on-site
- Meals and transportation assistance
- Community events or groups on-site
- Accessible building design
- Medical outreach
- Help with chores



TENANTS IN THE NEIGHBORHOOD

SAFETY ORIENTED:

- Secure entries
- Reception desk staffed 24 hours a day, 365 days a year.
- Visitor check-in

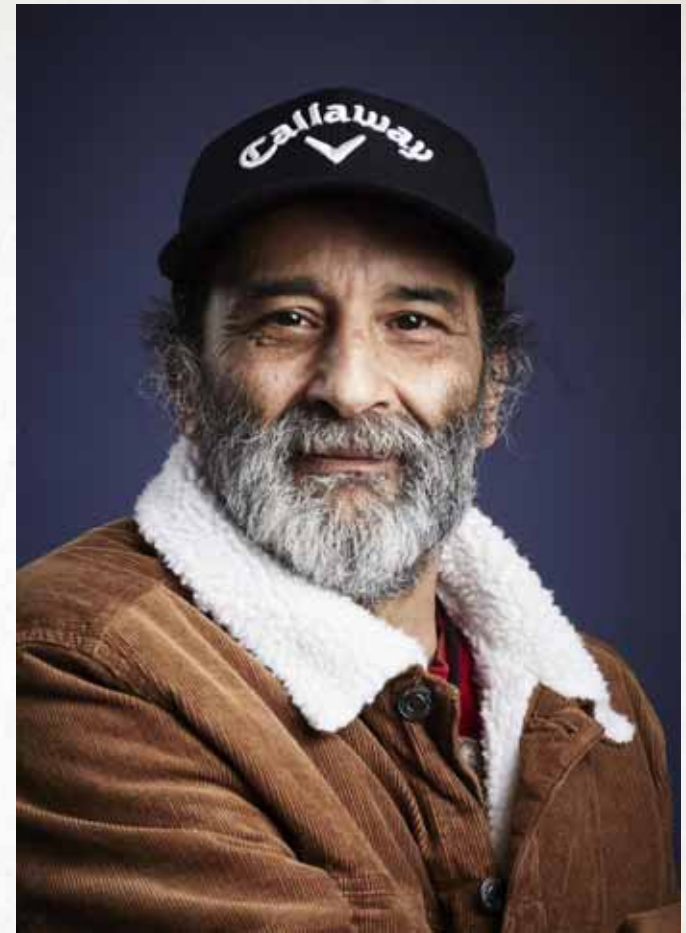
CLIENT EXPECTATIONS:

- "Good Neighbor Policy"
- DESC staff response
- Tenant expectations and lease enforcement



TENANT OUTCOMES

- Those most in need, receive the services they need!
- Better access to medical and behavioural health care.
- Begins to reconnect individuals with the greater community and support networks.



COMMUNITY OUTCOMES

- 105 people will have a place to call home, and a community to thrive in!
- DESC staff help monitor neighborhood activity 24/7, 365 days a year; helping keep our tenants and the greater community safe.
- Residents will patronize local businesses.
- During construction, workers will patronize local businesses.
- Seattle taxpayers save money:
 - 3 days in Harborview = 1 month in King County Jail = **1 year in DESC Housing**



SAVING MONEY, SAVING LIVES, SAVING FUTURES



HOUSING FIRST



HEALTH SERVICES



SURVIVAL SERVICES



CRISIS RESPONSE



RESEARCH & INNOVATION



ADVOCACY



EMPLOYMENT SERVICES



INTEGRATED SERVICES

DESC 15th Avenue W: Design Process & Timeline

- **May 2022** –
 - Site identified
 - Architects begin design development
- **September 2022** –
 - DESC applies for capital funding
 - DESC holds first Neighborhood Community Meeting
- **November 2022** –
 - DESC will hold second Neighborhood Community Meeting
 - DESC target for land closing
- **December 2022** – Public funding awards announced
- **March 2023** – Architect submits building permit
- **August 2023** –
 - Building permit issued
 - construction begins

DESC 15th AVENUE W BUILDING DESIGN

- 105 studio units
- Level 1 spaces:
 - Reception desk
 - Consult rooms
 - Medical office
 - Lounge area
 - Conference rooms
 - Commercial kitchen and dining area

Conceptual Building Image



DESC 15th Avenue W building designed by SMR Architects



Volunteers prepare a
Hobson Place apartment
for its new tenant





THE NORTH STAR

Opened August 2022

Located in the Bitter Lake
neighborhood of Seattle.

THANK YOU!

We welcome your questions and feedback, email;

awilliamson@desc.org

desc.org/15th-ave-west

